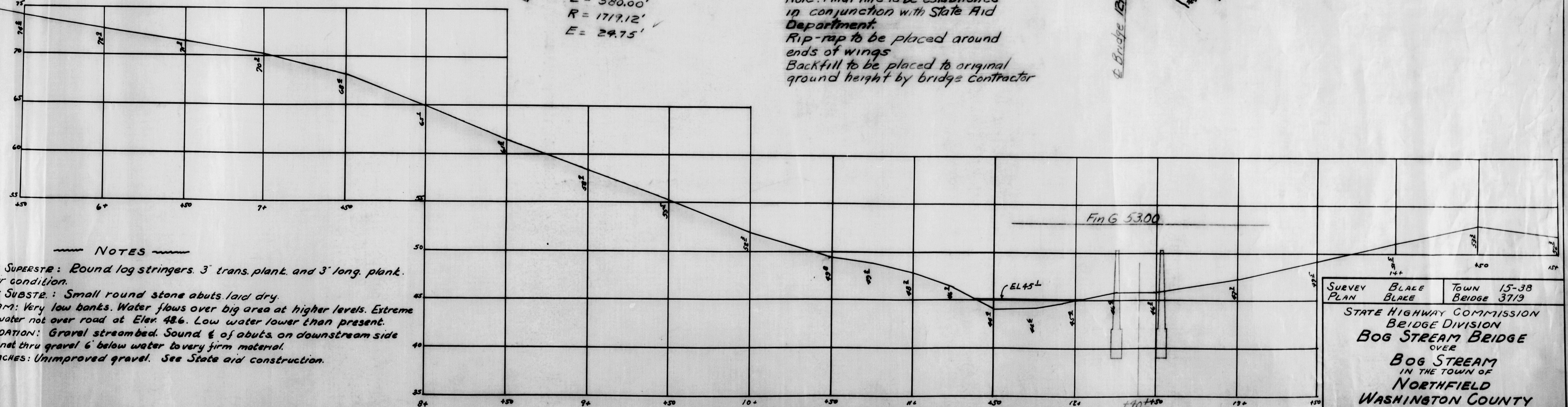


$\Delta = 19^{\circ}-20'$
 $D = 3^{\circ}-20'$
 $T = 292.82'$
 $L = 580.00'$
 $R = 1719.12'$
 $E = 29.75'$

Note: Final line to be established
 in conjunction with State Aid
 Department.
 Rip-rap to be placed around
 ends of wings
 Backfill to be placed to original
 ground height by bridge contractor

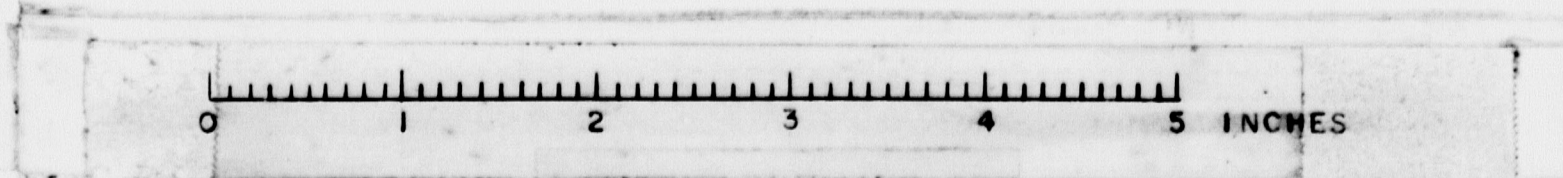


NOTES
 EXIST. SUPERSTR: Round log stringers. 3' trans. plank. and 3' long. plank.
 All fair condition.
 EXIST. SUBSTR: Small round stone abuts. laid dry.
 STREAM: Very low banks. Water flows over big area at higher levels. Extreme
 high water not over road at Elev. 48.6. Low water lower than present.
 FOUNDATION: Gravel streambed. Sound & of abuts. on downstream side
 Rod penetr thru gravel 6' below water to very firm material.
 APPROACHES: Unimproved gravel. See State aid construction.

PROFILE
 Scales - Hor. 1" = 30' VERT. 1" = 5'

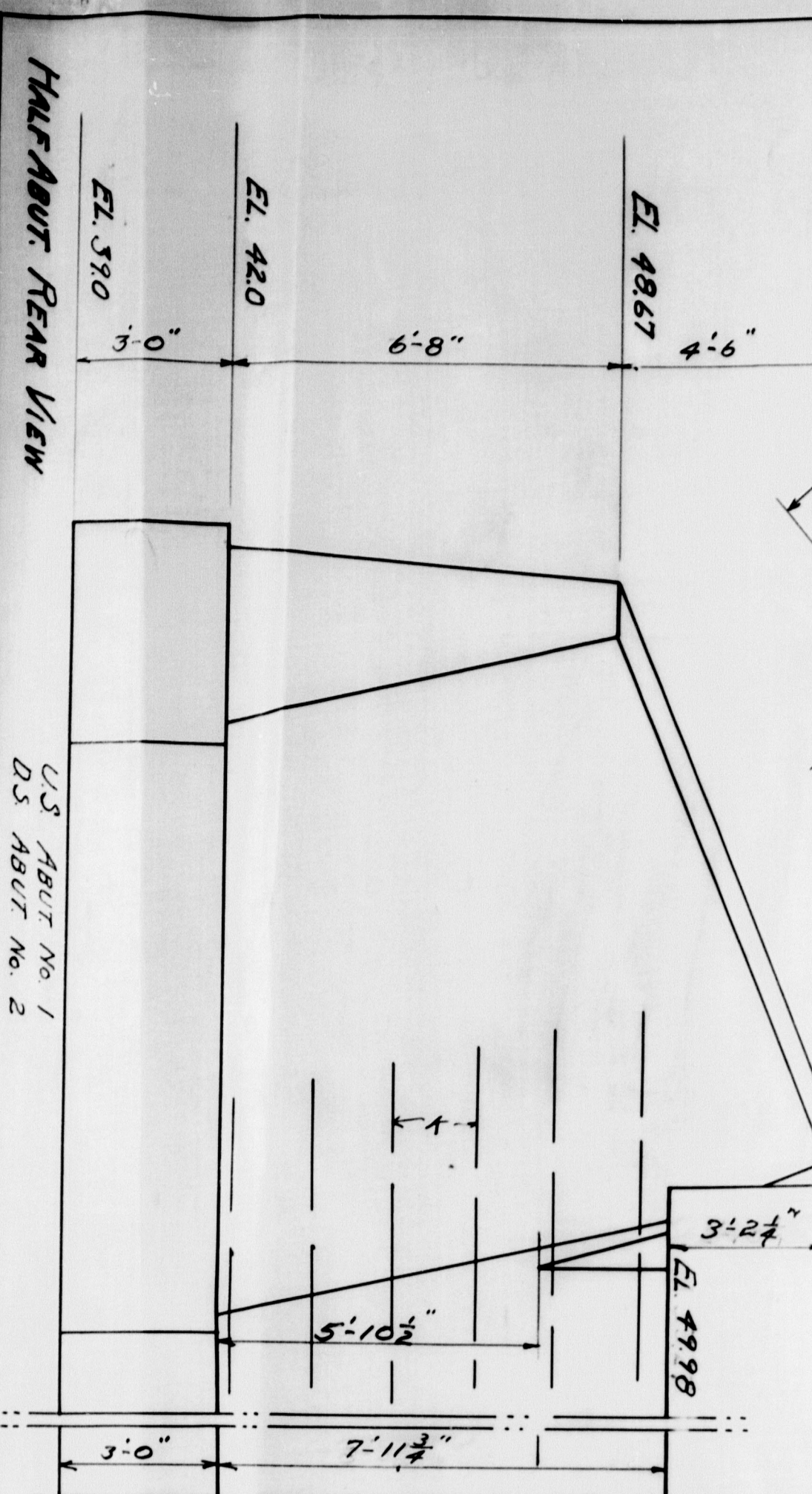
SURVEY PLAN	BLADE BLADE	TOWN 15-38
		BRIDGE 3719

STATE HIGHWAY COMMISSION
 BRIDGE DIVISION
BOG STREAM BRIDGE
 OVER
BOG STREAM
 IN THE TOWN OF
NORTHFIELD
WASHINGTON COUNTY
 SURVEY PLAN
 SHEET 1 OF 3 AUGUSTA, ME FEB. 20, 1940



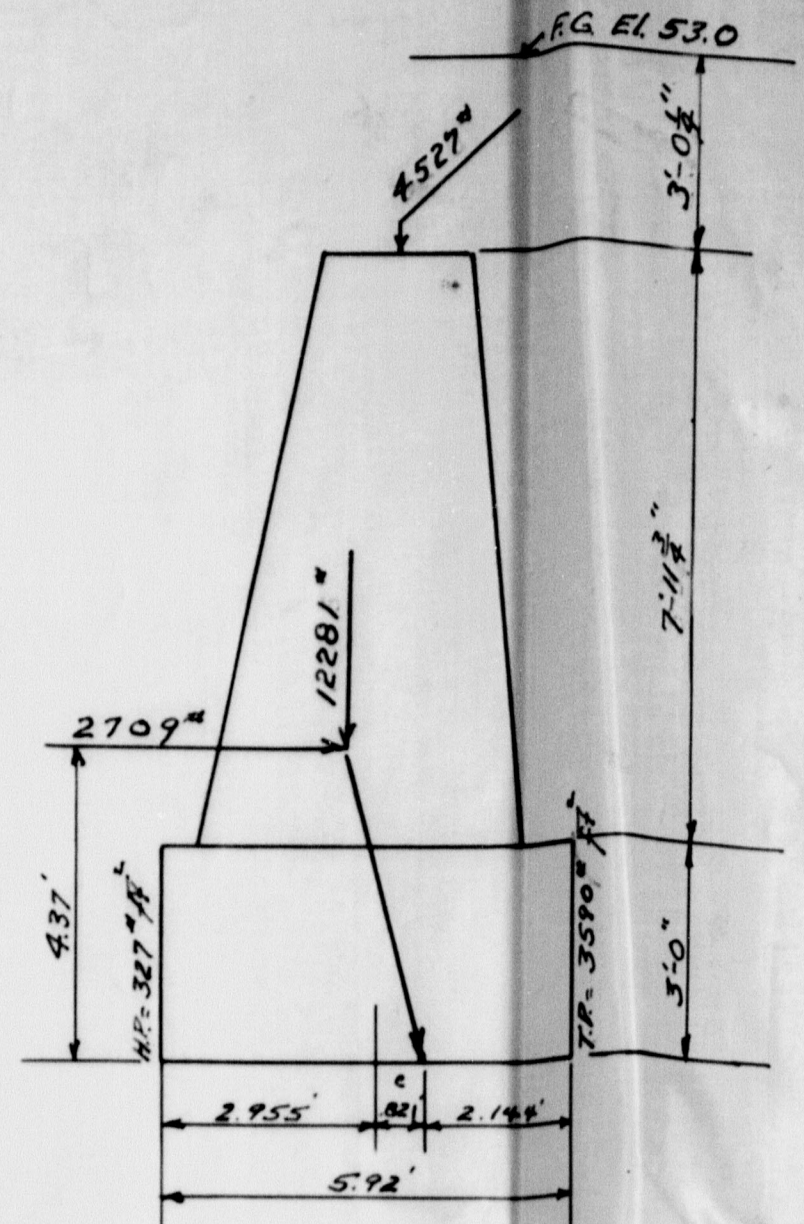
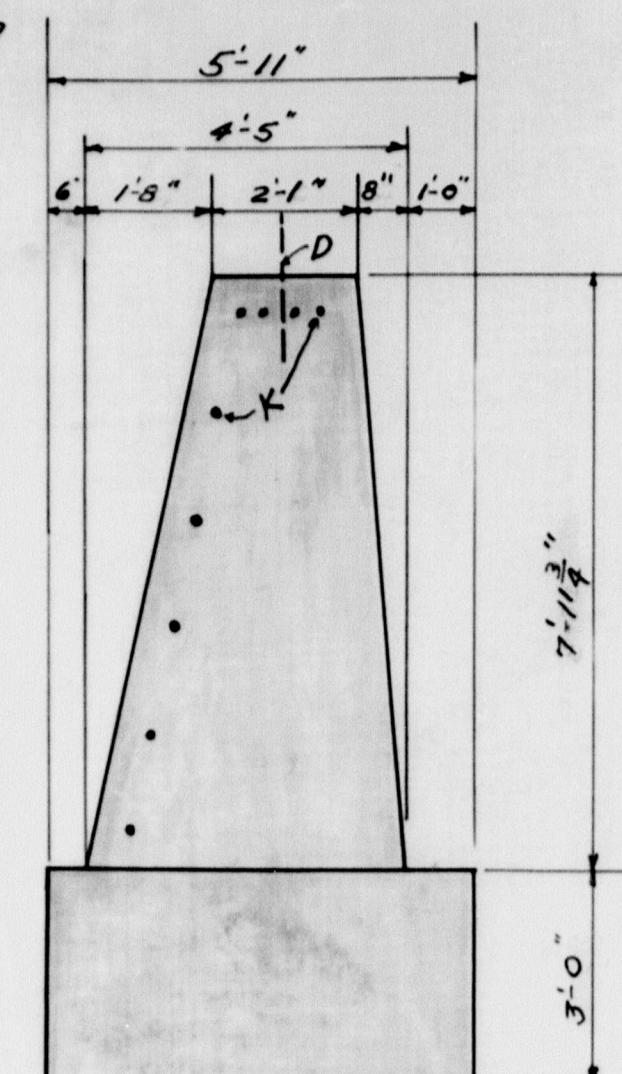
HALF ABUT. REAR VIEW

US ABUT. No. 1
DS ABUT. No. 2



K bars to be placed 6" from back form at junction of abutment and wing walls. Spaced 1'-6" vertically. Also at 4" centers horizontally 6" below bridge seat. Bend in field to fit form.

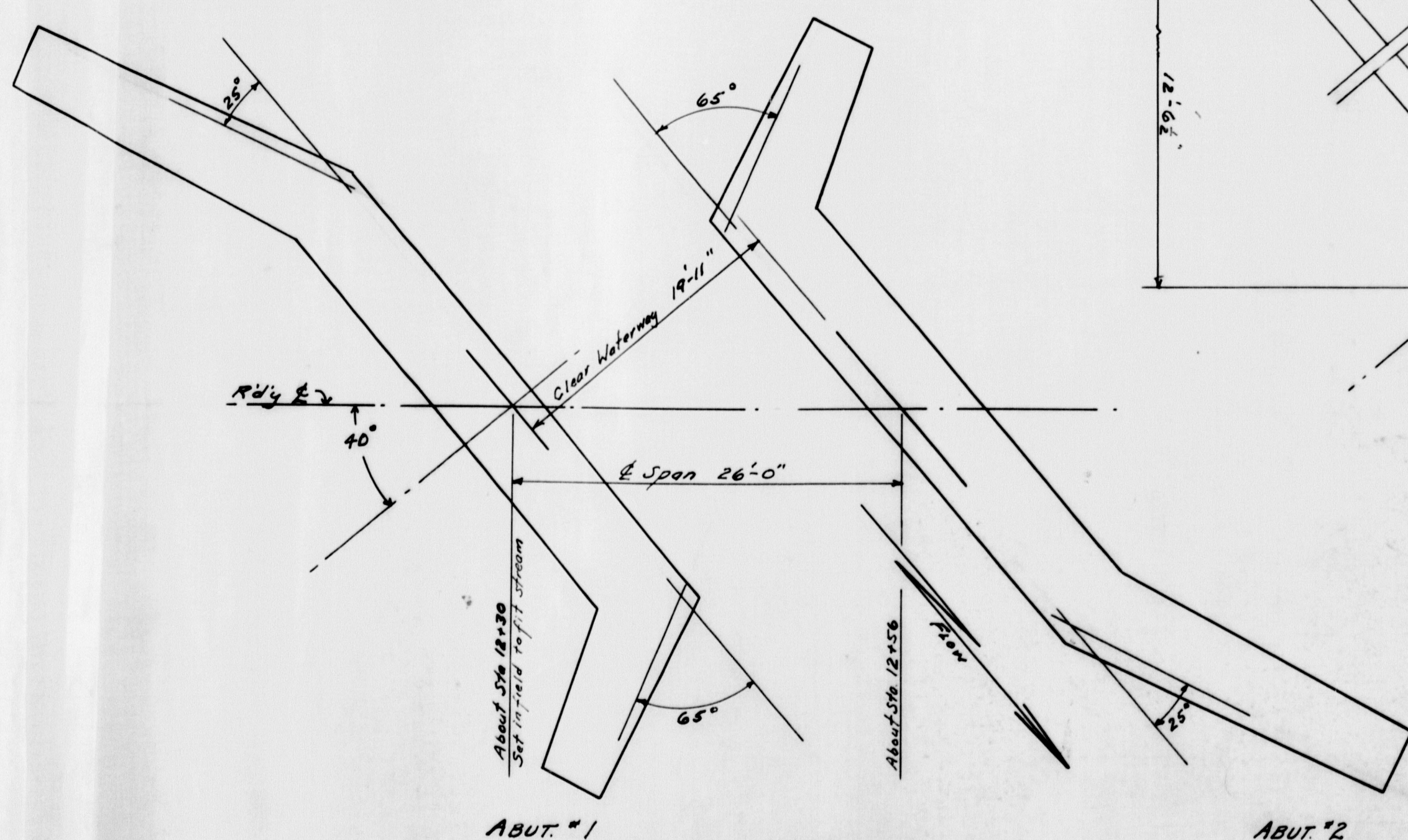
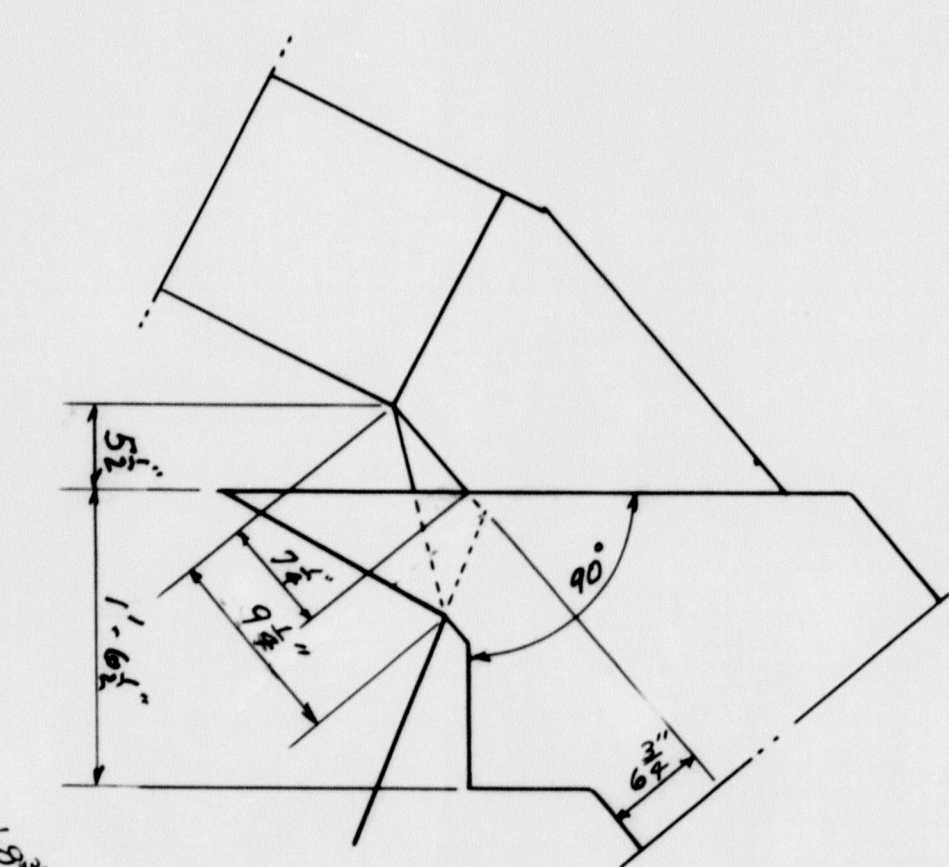
Two dowels "D" fixed end each girder. Projecting end to be wrapped with roofing felt before placing superstructure concrete on the exterior girders only.



SECTION A-A

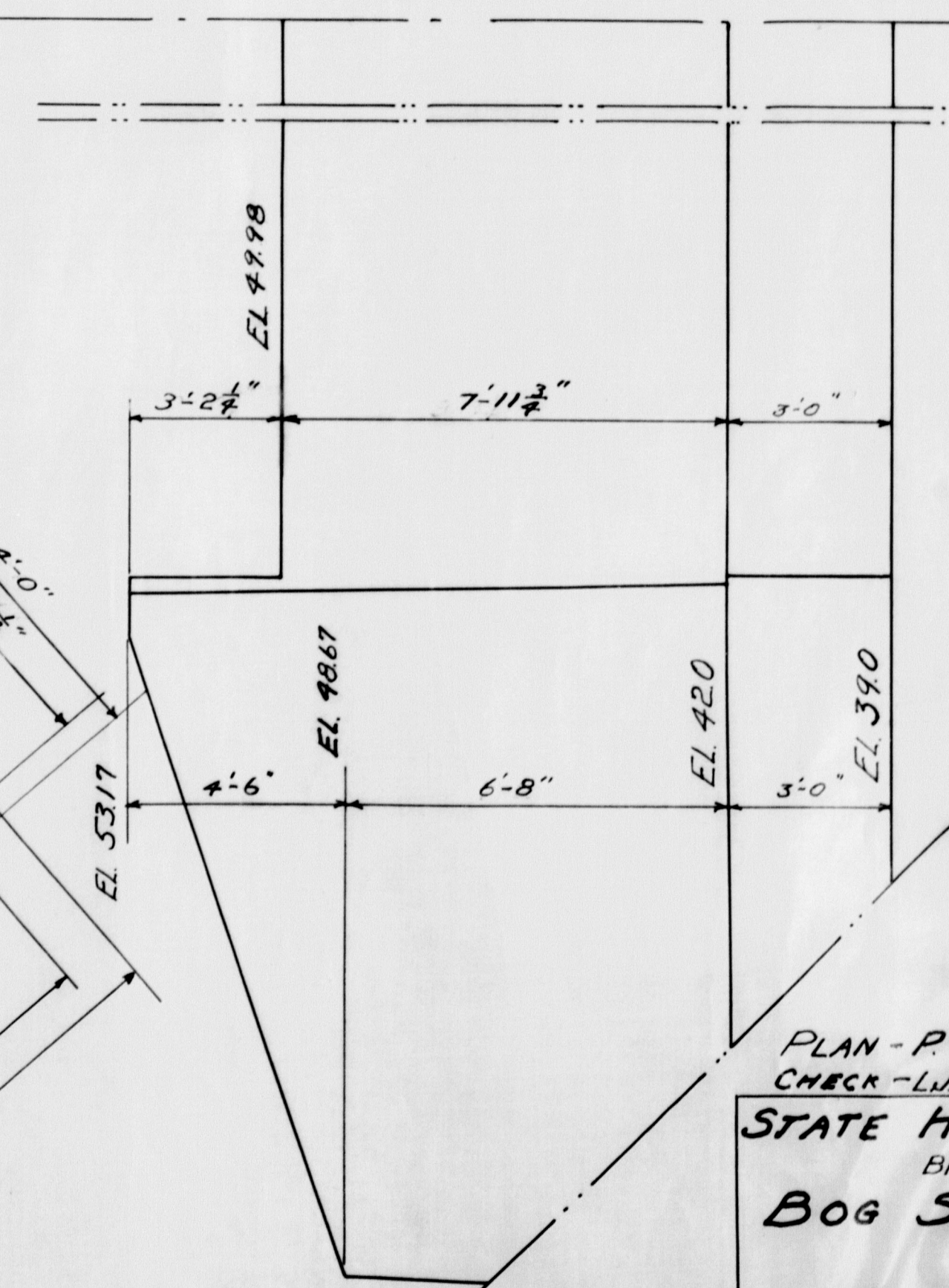
Back batter on breast wall 2 1/2" / ft.
Back batter on wings 3" / ft.

JOG DETAIL



ABUTMENT LAYOUT
BOTH ABUTMENTS ALIKE

ABUTMENT PLAN

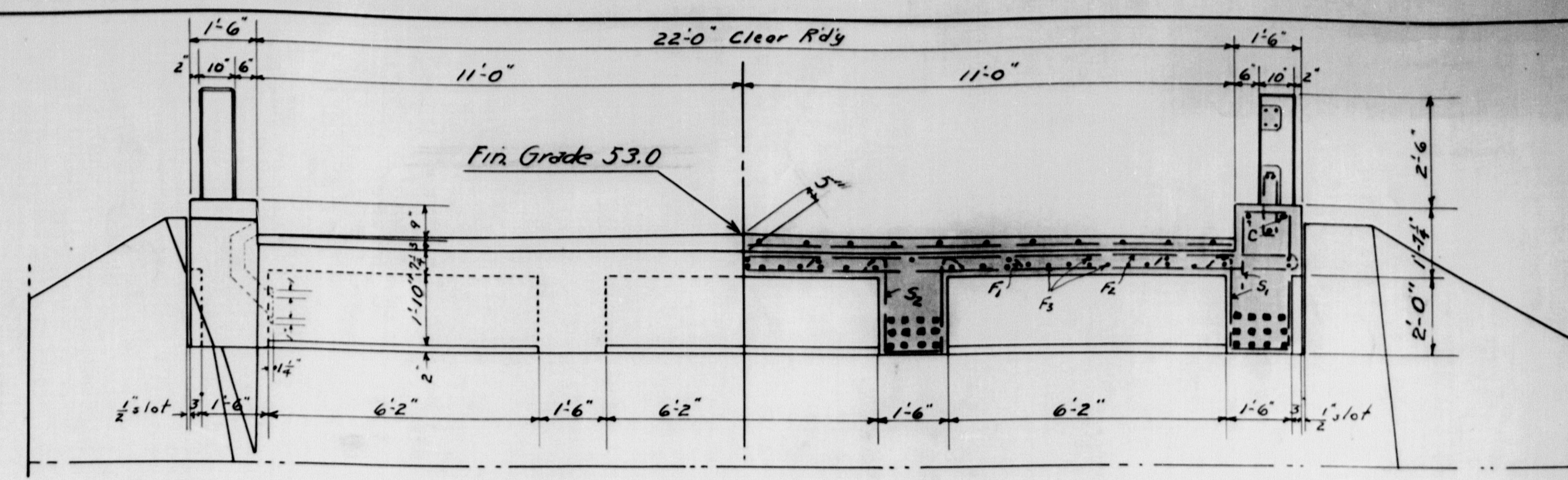


US ABUT. No. 1
DS ABUT. No. 2

PLAN - P. JOHNSON
CHECK - LWB + RBP
TOWN 15-38
BRIDGE 3719
STATE HIGHWAY COMMISSION
BRIDGE DIVISION
BOG STREAM BRIDGE
OVER
BOG STREAM
IN THE TOWN OF
NORTHFIELD
WASHINGTON COUNTY
SUBSTRUCTURE
SHEET 2 OF 3 AUGUSTA, ME. APRIL 16, 1940

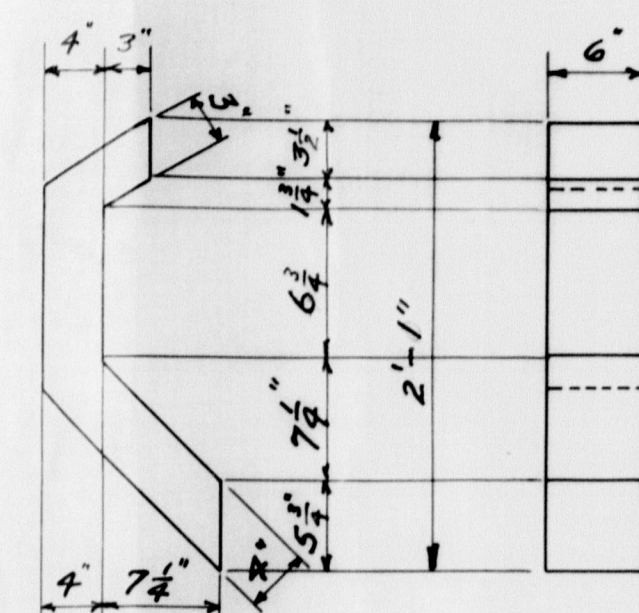


SECTION A-A



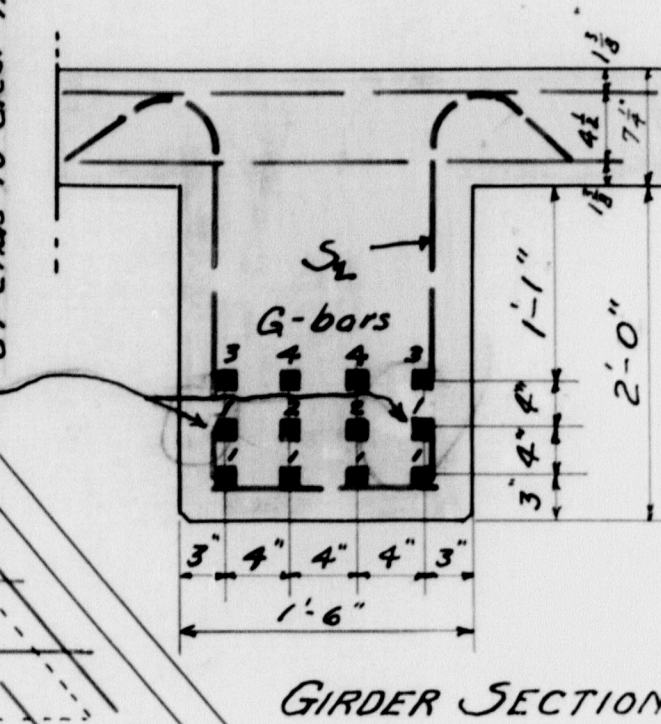
HALF REAR ELEVATION

HALF TRANSVERSE SECTION

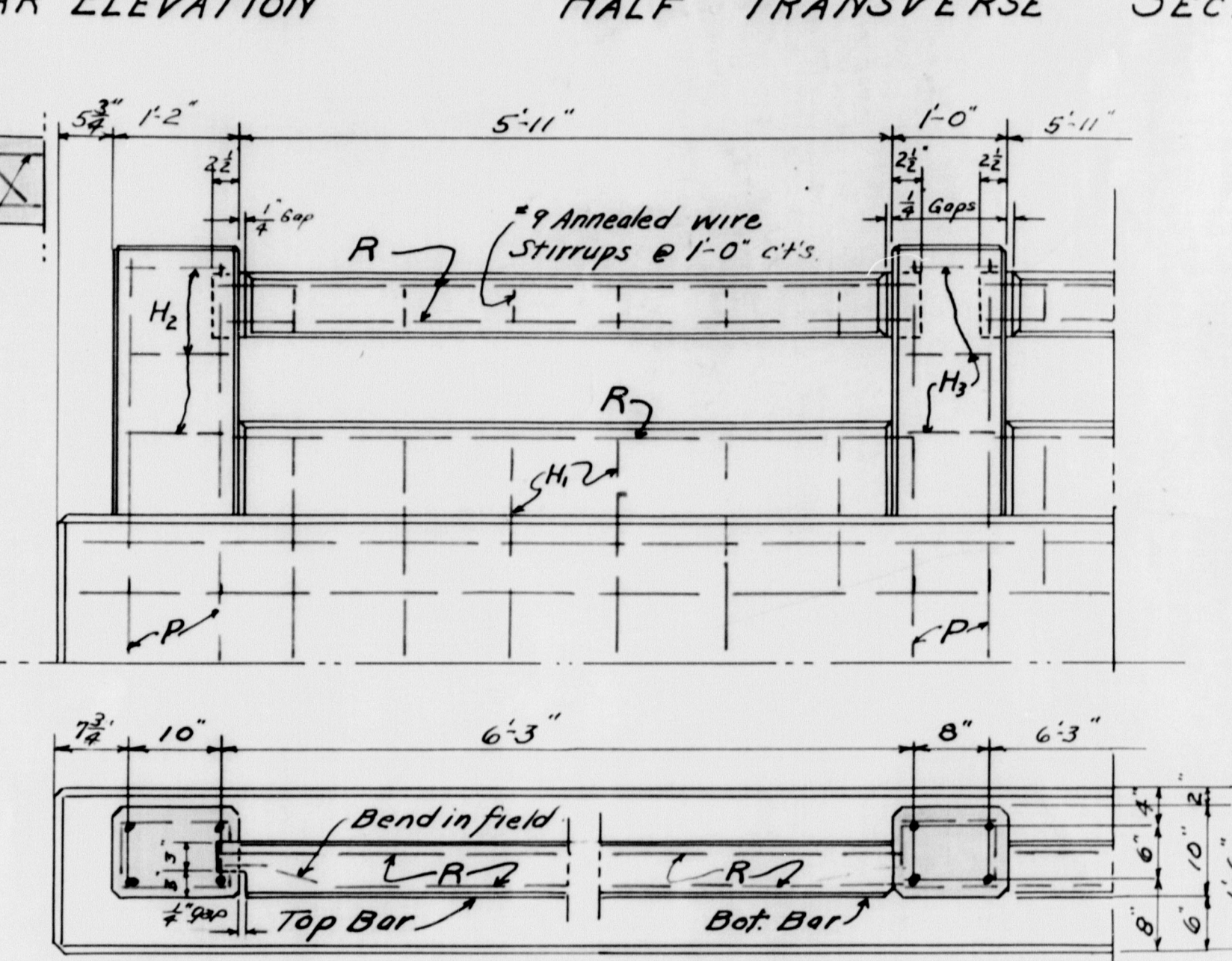


METAL DRAIN ~ 4 REQD
24-Gauge Galvanized Iron

Bend horizontally toward center of beam at ends to clear hooks of bottom bars.



GIRDER SECTION

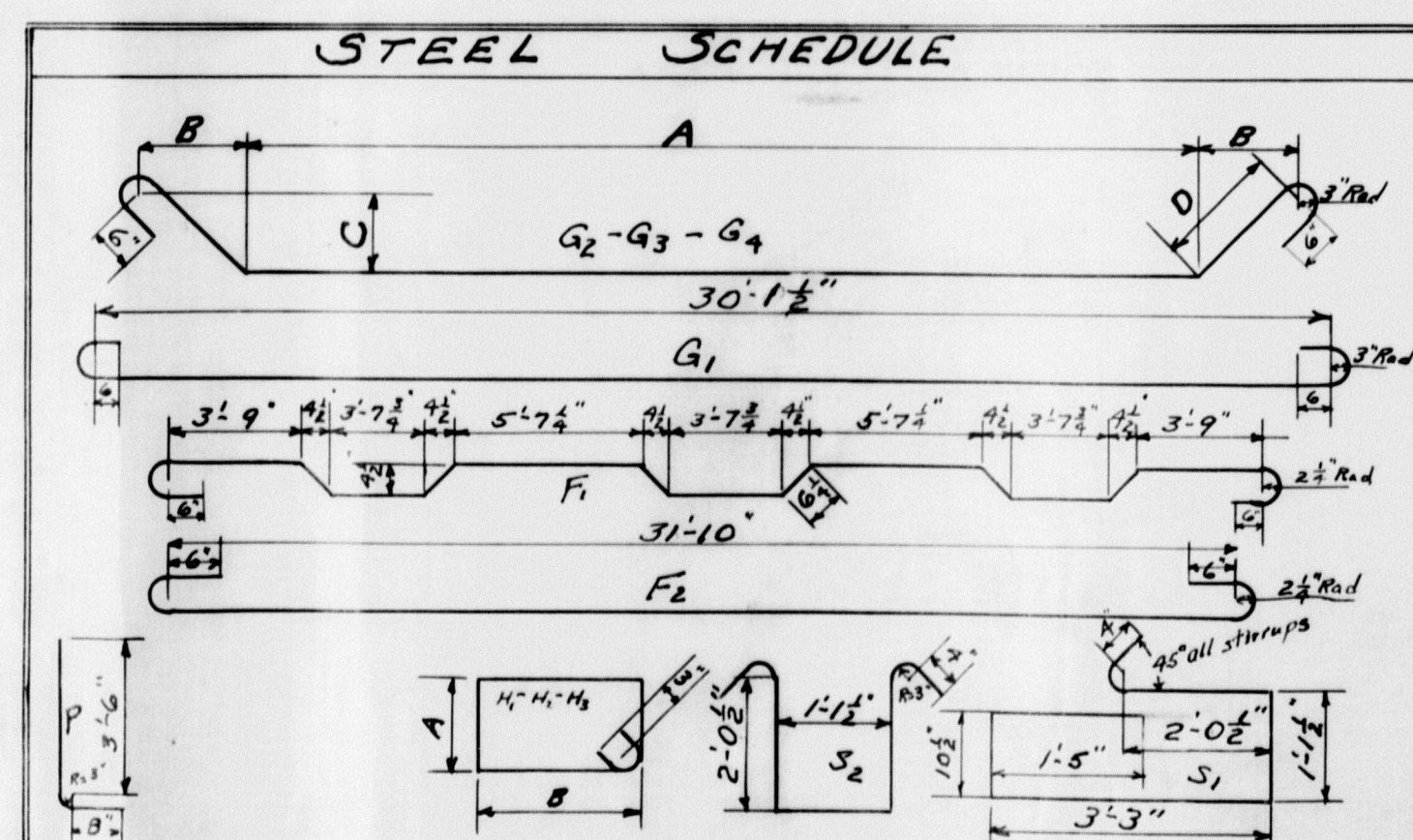


RAIL DETAILS

NOTE: Curb to be cast with slab. Steel for posts and lower bar to be placed before curb is cast. The lower bar is to be cast in place. The longitudinal steel in the bar to project 2". The top bar to be precast and set in position so that the ends project into post forms 2". Wrap the tongue end with two layers of heavy roofing felt. Build post forms and cast posts. All exposed edges of concrete to be chamfered 1/2" unless otherwise indicated. Wire stirrups for top bars to be constructed in the field from a single strand of #9 annealed wire. In forming the stirrups make a complete turn around each reinforcing bar.

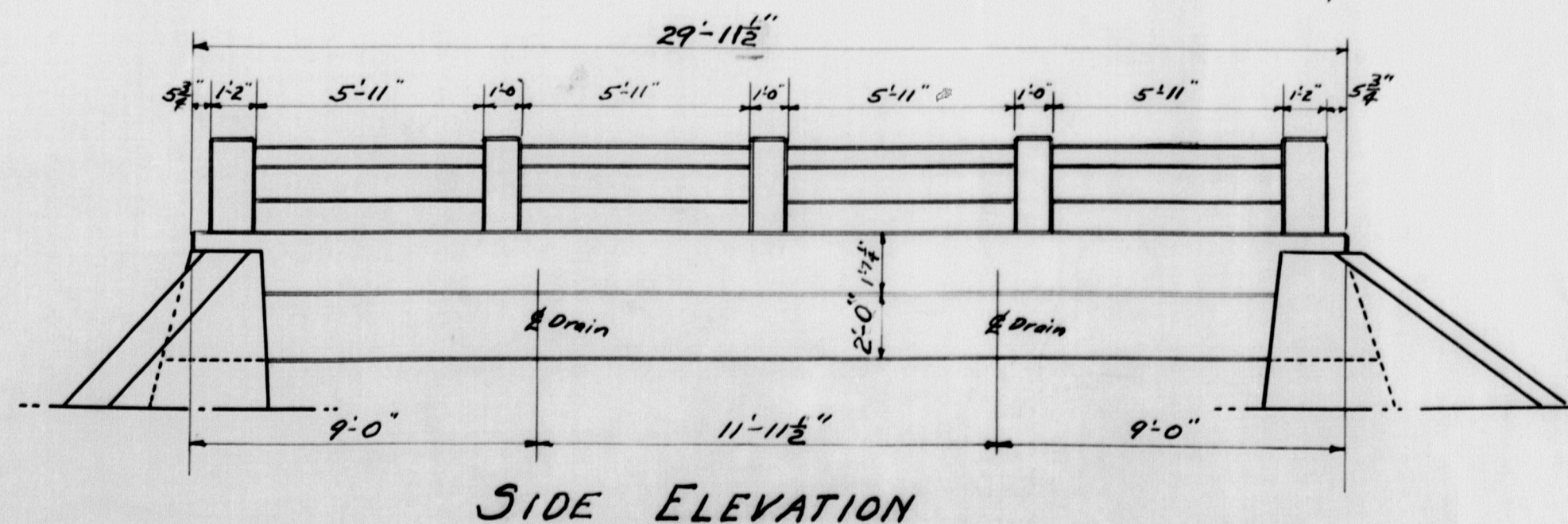
NOTE: Cover the 1/2" slot and the 2" opening between the bridge seat and the backwall on the back side with two layers of heavy roofing felt. Apply hot tar or asphalt to surface of concrete and to each layer of roofing felt as applied. Area to be covered by felt to be recessed 1/4" by nailing thin strips to the forms before the concrete is placed. Felt to be 10' wide.

H-15 LOADING
Fs = 16,000
Fc = 900
N = 10



BENT BARS						STRAIGHT BARS					
MARK	SIZE	NO REQD	A	B	C	D	MARK	SIZE	NO REQD	LENGTH	LOCATION
G ₂	1"	8	25'-3 3/4"	1'-11 1/2"	1'-7 1/4"	2'-6 1/2"	F ₅	3/8"	57	29'-9"	Slab
G ₃	1"	8	22'-0 1/2"	1'-7 1/2"	1'-3 1/4"	2'-0 1/2"	D	1"	11	2'-0"	Fixed end beams to abut.
G ₄	1"	8	18'-9 1/2"	1'-7 1/2"	1'-3 1/4"	2'-0 1/2"	C	1/2"	6	29'-7"	Curbs
F ₁	3/4"	21					R	1/2"	49	6'-3"	Rail bars
F ₂	3/4"	42					T	3/8"	22	29'-7"	Wearing surface
G ₁	1"	24					T ₂	3/8"	24	28'-4"	"
S ₁	1/2"	80					K	3/8"	37	8'-0"	Abutments
S ₂	1/2"	80					B	3/4"	6	32'-0"	Cross-beams
H ₁	1/2"	48	3'-3"	1'-6"							
H ₂	1/2"	12	7'-4"	11'-4"							
H ₃	1/2"	18	7'-4"	9'-4"							
P	3/4"	40									

All steel to be plain bars of structural grade. All dimensions are to centers of bars.



SIDE ELEVATION

PLAN ~ P. JOHNSON
CHECKED ~ L. B. + A. B. P.
TOWN 15-38
BRIDGE 3719
STATE HIGHWAY COMMISSION
BRIDGE DIVISION
BOG STREAM BRIDGE
OVER
BOG STREAM
IN THE TOWN OF
NORTHFIELD
WASHINGTON COUNTY
SUPERSTRUCTURE
SHEET 30F3 AUGUSTA, ME. APRIL 17, 1940

39-103